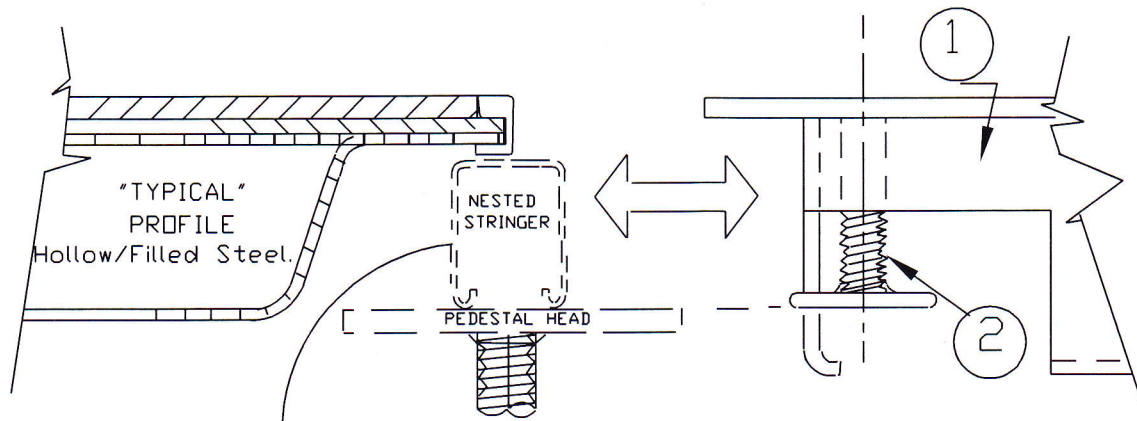


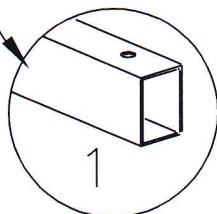
# "APPLICATION GUIDE" (INFINITY 55 SERIES / 53 SERIES)



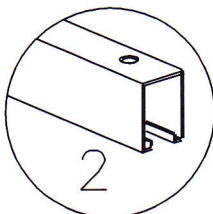
Infinity Parts List (choose 1 or 2)

- ① Infinity Grate (P/N: ISG55-15)  
Leveling Leg (P/N: CLX)
- ② Infinity Grate (P/N: ISG53-15)  
Leveling Leg (P/N: CLX)

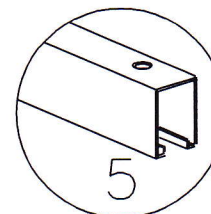
MFR. Tate/#2989  
Stringer dims, 22.15/16" L  
5/8" W  
1.1/8" H  
Hole Ctrs, 21.3/4"  
Stringer Type: Bolt on.



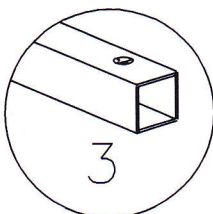
MFR: IAR/Atlantic  
Stringer dims, 23" L  
13/16" W  
1.1/4" H  
Hole Ctrs, 21.3/4"  
Stringer Type: Heavy Duty Bolt on.



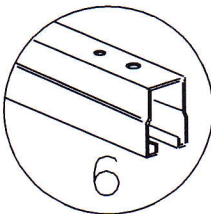
MFR. Tate  
Stringer dims, 23" L  
13/16" W  
1.1/4" H  
Hole Ctrs, 22"  
Stringer Type: Bolt on.



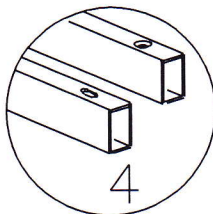
MFR: Unknown  
Stringer dims, 22.7/8" L  
1" W  
1" H  
Hole Ctrs, 22"  
Stringer Type: Bolt on.



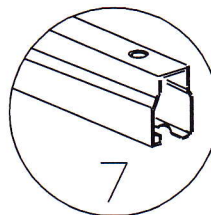
MFR. Severn  
Stringer dims, 23.1/16" L  
13/16" W  
1.1/16" H  
Hole Ctrs, 22.1/2"  
Stringer Type: Drop on.



MFR: ASM Modular Systems.  
Stringer dims, 22.15/16" L  
13/16" W  
1.1/4" H  
Hole Ctrs, 22"  
Stringer Type: Bolt on.



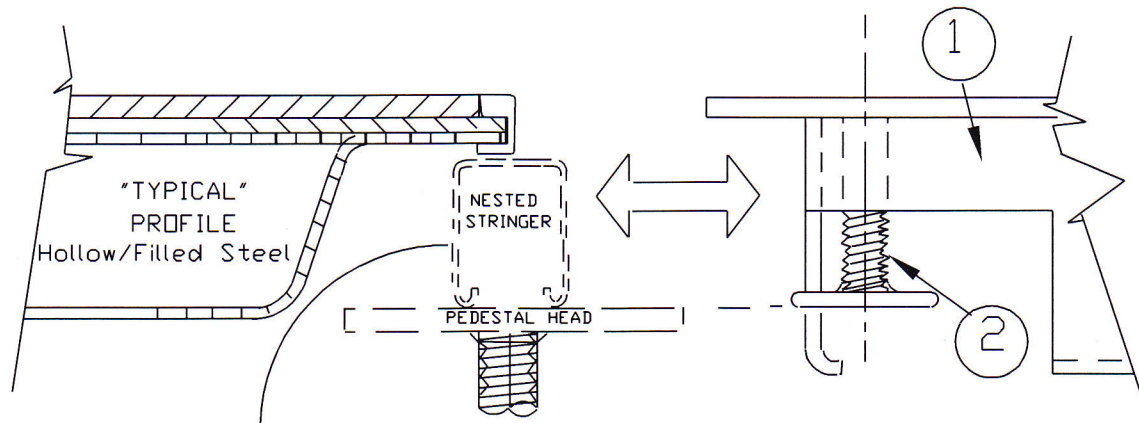
MFR. Donn Bolted  
Stringer dims, 23.1/16" L  
13/16" W  
1.1/16" H  
Hole Ctrs, 22"  
Stringer Type: Bolt on.



USE INFINITY PARTS LIST ABOVE  
FOR STRINGER APPLICATIONS.  
SHOWN ON LOWER PAGE AREA.

OPSTOCK, INC. 5228 WEST RIVER DR, NE COMSTOCK PARK, MI 49321 P: 616 241 6720 F: 616 241 6730			
SIZE	FSCM NO.	DWG NO. APPLICATION GUIDE	REV
SCALE: NTS.		DWG 39C-1	

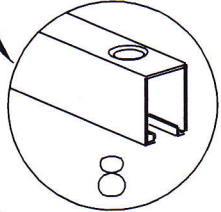
# "APPLICATION GUIDE" (INFINITY 55 SERIES / 53 SERIES)



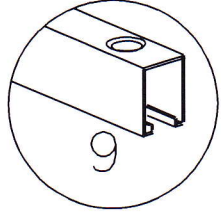
Infinity Parts List (choose 1 or 2)

- \* ① Infinity Grate (P/N: ISG55-15)  
Leveling Leg (P/N: CLX)
- ② Infinity Grate (P/N: ISG53-15)  
Leveling Leg (P/N: CLX)

MFR. Tate Heavy Duty  
 Stringer dims, 23' L  
 13/16" W  
 1.1/4" H  
 Hole Ctrs, 22"  
 Stringer Type: Bolt on.  
 Heavy Duty Floor. Tate #590956 Bolt on.

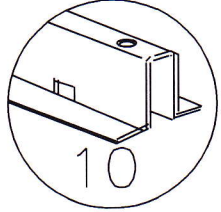


MFR. Maxcess BG2  
 Stringer dims, 22.7/8" L  
 13/16" W  
 1.1/4" H  
 Hole Ctrs, 22"  
 Stringer Type: Bolt on.

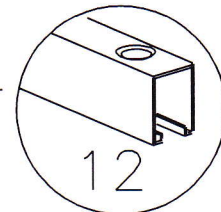


\*

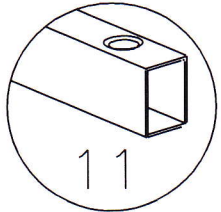
MFR. C-Tec/IAR/Haworth  
 Stringer dims, 22.7/8" L  
 1.3/16" W  
 1.1/16" H  
 Hole Ctrs, 22"  
 Stringer Type: Bolt on.



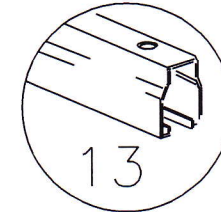
MFR. Custom  
 Stringer dims, 23.3/16 L  
 13/16" W  
 1.1/4" H  
 Hole Ctrs, 22.3/8"  
 Stringer Type: Bolt on.



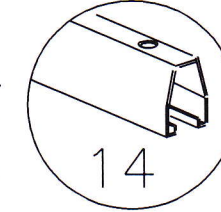
MFR. Tate/S-707  
 Stringer dims, 22.13/16" L  
 5/8" W  
 1" H  
 Hole Ctrs, 22.3/8"  
 Stringer Type. Drop on.



MFR. Severn  
 Stringer dims, 23.1/16" L  
 13/16" W  
 1.1/16" H  
 Hole Ctrs, 20.1/2"  
 Stringer Type: Cuff-Link.



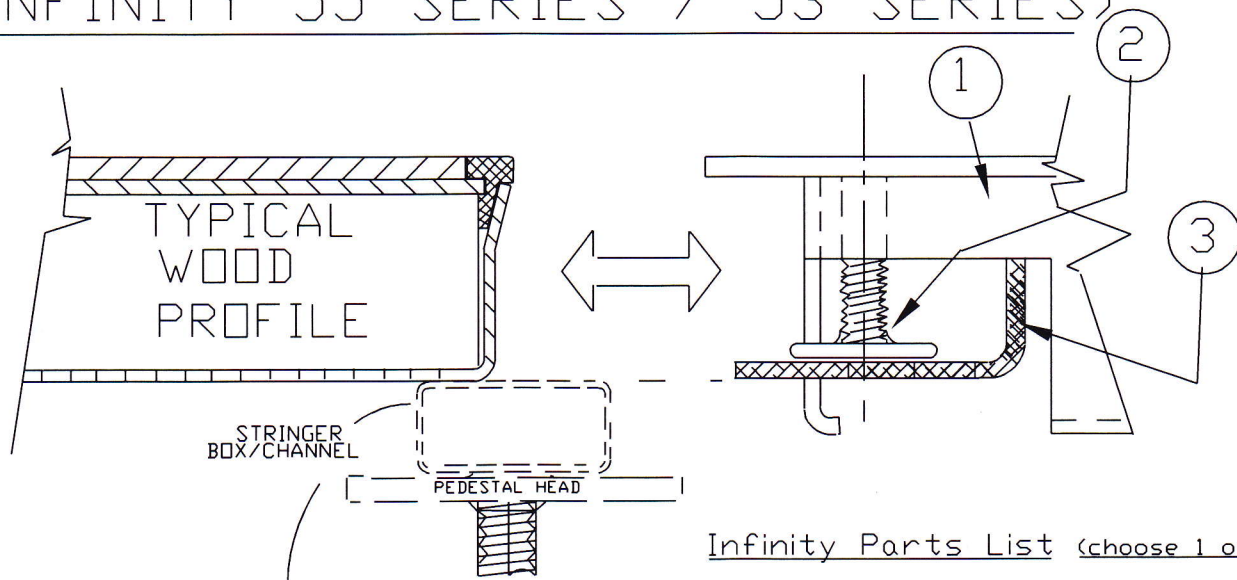
MFR. Lisky Mark 40  
 Stringer dims, 22.7/8" L  
 7/8" W  
 1.1/8" H  
 Hole Ctrs, 22"  
 Stringer Type: Bolt on.



\* Note—"Tight Fit" Probability (Option 1)

USE INFINITY PARTS LIST ABOVE FOR STRINGER APPLICATIONS.  
 SHOWN ON LOWER PAGE AREA.

# "APPLICATION GUIDE" (INFINITY 55 SERIES / 53 SERIES)

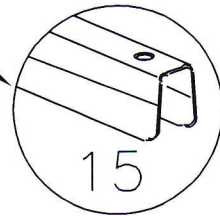


Infinity Parts List (choose 1 or 2)

- ① Infinity Grate (P/N: ISG55-15)  
Leveling Leg (P/N: CLL)  
"Z" Plate (P/N: ZPW)
- ② Infinity Grate (P/N: ISG53-15)  
Leveling Leg (P/N: CLL)  
"Z" Plate (P/N: ZPW-C)

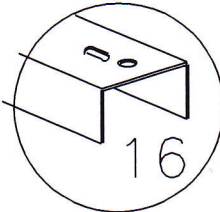
MFR. ASM/MAXCESS

Stringer dims, 22.7/8" L  
7/8" W  
1.1/8" H  
Hole Ctrs, 22"  
Stringer Type: Snap on.



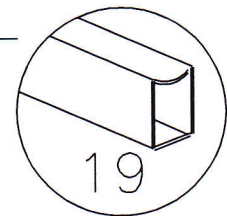
MFR. Computer Environments

Stringer dims, 21.7/8" L  
1.1/8" W  
3/4" H  
Hole Ctrs, 21.1/2"  
Stringer Type: Bolt on.



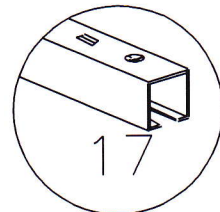
MFR: Camino Wood Core.

Stringer dims, 22.7/8" L  
1" W  
1.1/4" H  
Hole Ctrs, 20.1/2"  
Stringer Type: Bolt on.  
Canadian design Old Style.



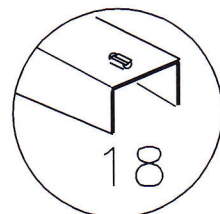
MFR: Tate/ Wood Core.

Stringer dims, 22.13/16" L  
1" W  
3/4" H  
Hole Ctrs, 21"  
Stringer Type: Bolt on.



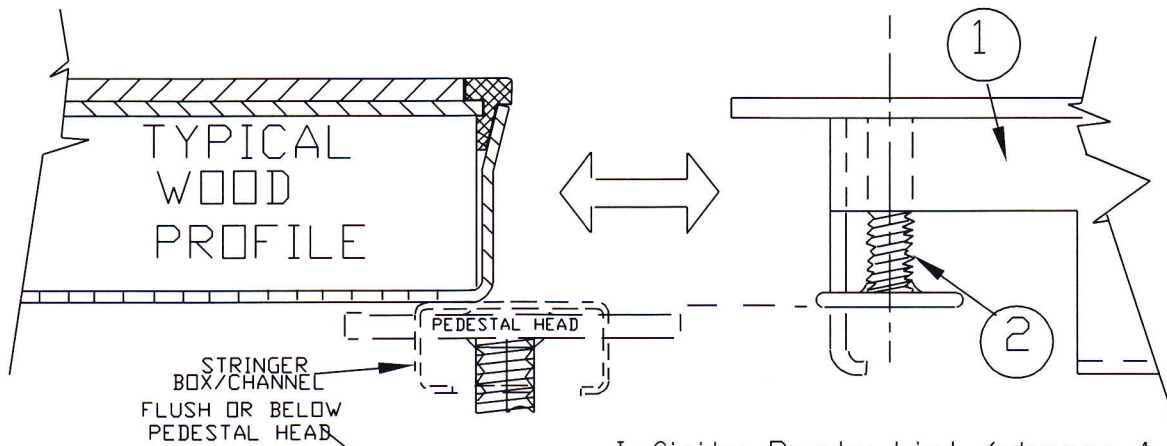
Unknown

MFR: ASM Modular Systems.  
Stringer dims, 22.5/16" L  
1.1/8" W  
5/8" H  
Hole Ctrs, 21.1/2"  
Stringer Type: Bolt on.



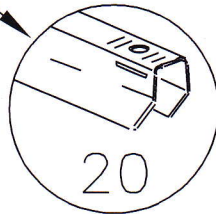
USE INFINITY PARTS LIST ABOVE FOR STRINGER APPLICATIONS.  
SHOWN ON LOWER PAGE AREA.

# "APPLICATION GUIDE" (INFINITY 55 SERIES / 53 SERIES)



Infinity Parts List (choose 1 or 2)

MFR: C-Tec PSL-1  
 Stringer dims, 22.5/8" L  
                   5/8" W  
                   1" H  
 Hole Ctrs, 21.7/8"  
 Stringer Type: Twist-on/Bolted.

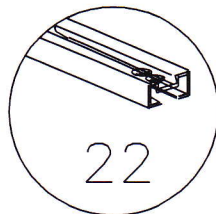


- ① Infinity Grate (P/N: ISG55-15)  
Leveling Leg (P/N: CLL)
- ② Infinity Grate (P/N: ISG53-15)  
Leveling Leg (P/N: CLL)

MFR: Custom.  
 Stringer dims, 23.1/4" L  
                   1" W  
                   1" H  
 Hole Ctrs, 20.3/4"  
 Stringer Type: Bolt on.

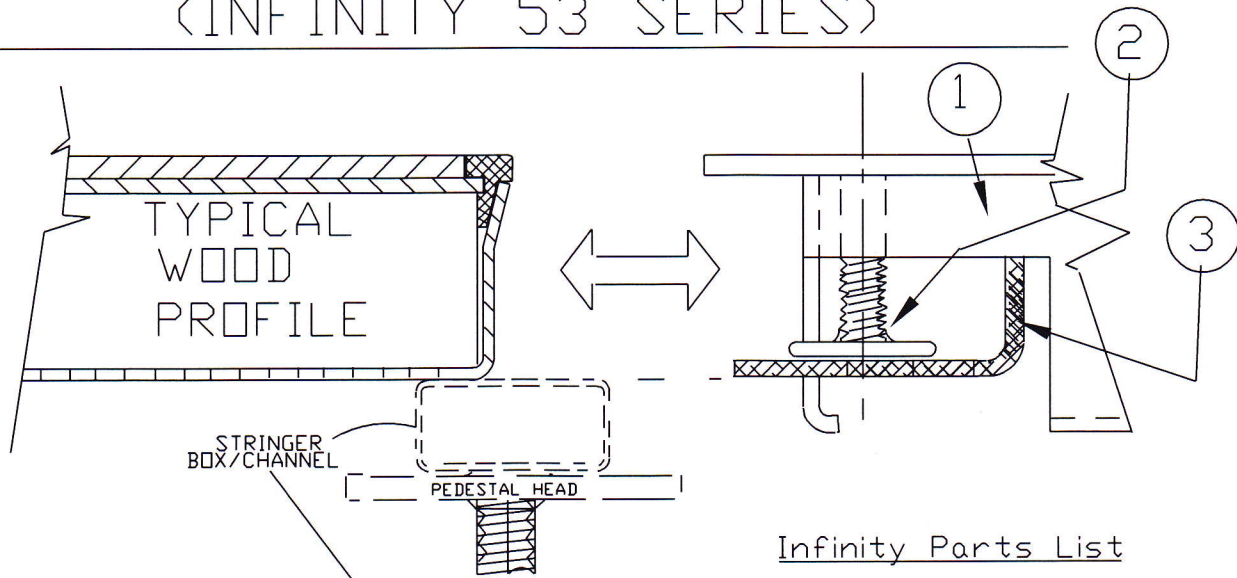


MFR: Westinghouse  
 Stringer dims, 22.7/8" L  
                   1" W  
                   9/16" H  
 Hole Ctrs, 22.5/16"  
 Stringer Type: Bolt on.  
 Wood Core



USE INFINITY PARTS LIST ABOVE FOR STRINGER APPLICATIONS.  
 SHOWN ON LOWER PAGE AREA.

# "APPLICATION GUIDE" (INFINITY 53 SERIES)

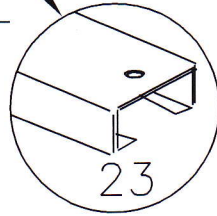


## Infinity Parts List

- ① Infinity Grate (P/N: ISG53-15)  
Leveling Leg (P/N: CLL)  
"Z" Plate (P/N: ZPW-C)
- ② Infinity Grate (ISG55-15)  
NO APPLICATION
- ③

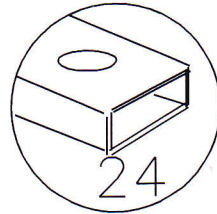
### MFR. Computer Environments

Stringer dims, 22.5/16" L  
1.1/2" W  
13/16" H  
Hole Ctrs, 21.1/4"  
Stringer Type: Bolt on.



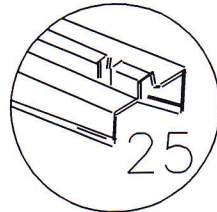
### MFR. Donn/Low Profile

Stringer dims, 22.15/16" L  
1.1/4" W  
5/8" H  
Hole Ctrs, 21.7/16"  
Stringer Type: Bolt on.



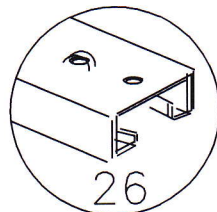
### MFR: Waco 101

Stringer dims, 21" L  
1.1/4" W  
13/16" H  
Hole Ctrs, N/A.  
Stringer Type: Snap on.



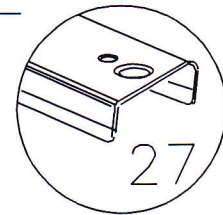
### MFR: MaxcessWC5000

Stringer dims, 22.1/8" L  
1.5/8" W  
13/16" H  
Hole Ctrs, 21.1/8"  
Stringer Type: Bolt on.



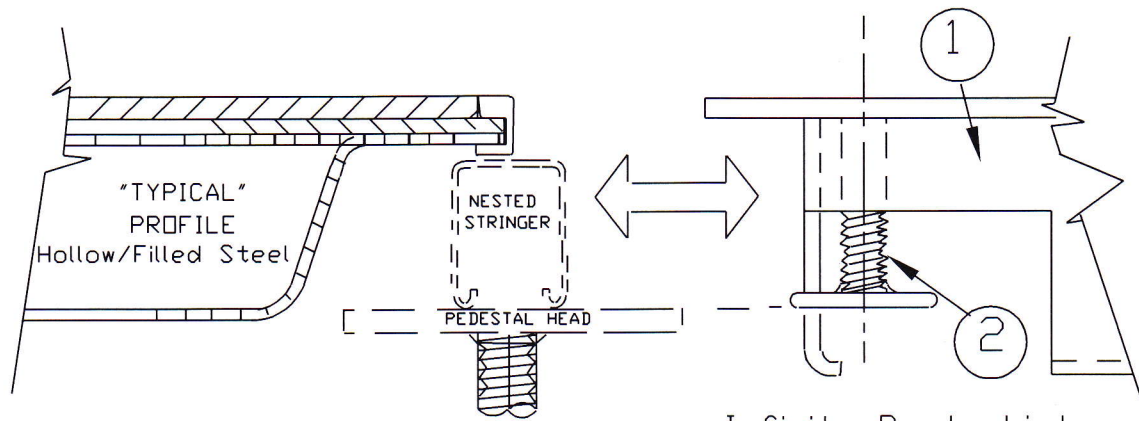
### MFR. FSF Floors

Stringer dims, 22.5/16" L  
1.1/4" W  
7/8" H  
Hole Ctrs, 21.1/4"  
Stringer Type: Bolt on.



USE INFINITY PARTS LIST ABOVE FOR STRINGER APPLICATIONS.  
SHOWN ON LOWER PAGE AREA.

# "APPLICATION GUIDE" (INFINITY 53 SERIES)



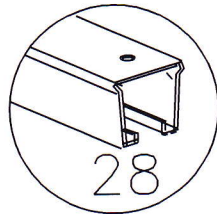
### Infinity Parts List

- ① Infinity Grate (P/N: ISG53-15)  
Leveling Leg (P/N: CLX)
- ② Infinity Grate (P/N: ISG55-15)  
LIMITED/ NO APPLICATION

MFR. Tate/Mark 20/30

Stringer dims, 22.7/8" L  
(1.7/16" w/pad.) 1" W  
1.1/4" H

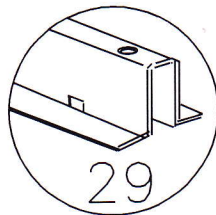
Hole Ctrs, 22"  
Stringer Type: Bolt on.



MFR. C-Tec/IAR/Haworth.

Stringer dims, 22.7/8" L  
1.3/16" W  
1.1/16" H

Hole Ctrs, 22"  
Stringer Type: Bolt on.



USE INFINITY PARTS LIST ABOVE FOR STRINGER APPLICATIONS.  
SHOWN ON LOWER PAGE AREA.

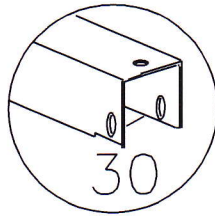
# "APPLICATION GUIDE"

## (INFINITY AIR GRATE)

### INFINITY PARTS LIST (VARIES) CONSULT FACTORY

MFR: Unknown  
 Stringer dims, 22.1/2" L  
 1.1/2" W  
 1.3/4" H

Hole Ctrs, 21.1/2"  
 Stringer Type: Bolt on.  
 Heavy Duty Floor.

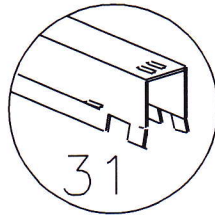


30

MFR: TateModel 801

Stringer dims, 22.15/16" L  
 3/4" W  
 1" H

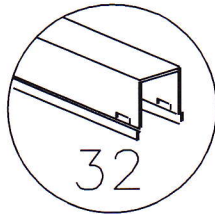
Hole Ctrs, N/A.  
 Stringer Type: Snap on.



31

MFR: Donn

Stringer dims, 22.3/4" L  
 1" W  
 1.13/16" H  
 Hole Ctrs, N/A  
 Stringer Type: Bolt on.

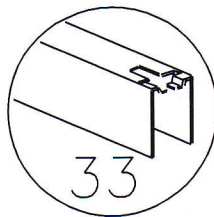


32

MFR: Unknown Custom.

Stringer dims, 22.11/16" L  
 13/16" W  
 1.1/4" H

Hole Ctrs, 21.9/32"  
 Stringer Type: Bolt on.

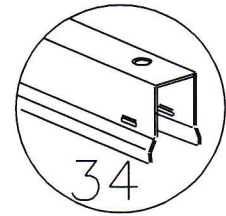


33

MFR: Donn/Snap on

Stringer dims, 22.7/8" L  
 3/4" W  
 1.1/4" H

Hole Ctrs, N/A  
 Stringer Type: Snap on.

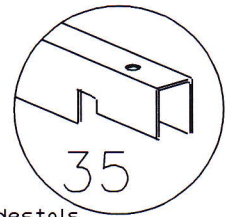


34

MFR: Custom.

Stringer dims, 22.11/16" L  
 1/2" W  
 1" H

Hole Ctrs, 21"  
 Stringer Type: Bolt on.  
 Use with C-Tec snap on pedestals  
 on stringerless applications

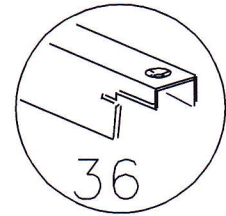


35

MFR: Unknown Custom.

Stringer dims, 22.7/16" L  
 5/8" W  
 1" H

Hole Ctrs, 21.11/16"  
 Stringer Type: Bolt on.



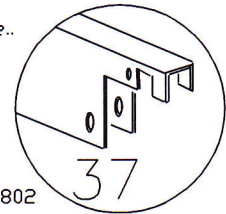
36

MFR: Custom, Tate 802 for Europe..

Stringer dims, 22.7/16" L  
 5/8" W  
 2" H

Hole Ctrs, 21.5/8"  
 Stringer Type: Bolt on.

European version of the series 802



37